



9 Atherton Terrace Churton Park, Wellington



4



2



2

You will be I-M-P-R-E-S-S-E-D.

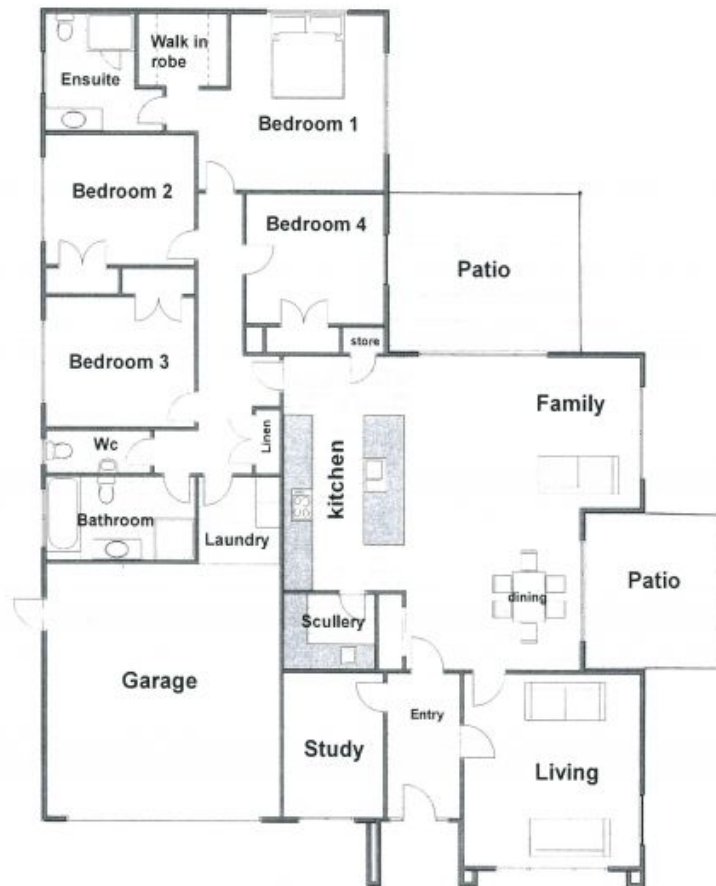
Affordable, brand new, single level 4 bedroom (+ study) home set in the desirable new release Atherton Terrace. 237m² of Luxury throughout, including gas central heating, undertile heating in the bathrooms, a designer kitchen with a granite benchtop and a walk in scullery to name just a few. Separate lounge, open plan dining and family areas that flows out to a sizable flat lawn and patio offering a lifestyle for you and your family. 2 bathrooms plus a separate WC and 2 car garaging complete the picture.

Deadline Friday 29th November 2019 at 12.00pm. BEO \$1,170,000

To inspect the site and to obtain plans and specification etc, phone me NOW

Craig Freear

0274 441 922



9 Atherton Terrace

Churton Park, Wellington

CRAIG FREEAR
REAL ESTATE NOW